

# THE RGV OFFICIAL AIRLINE ACTIVITY REPORT NOVEMBER 2002

## RGV AIRLINE BOARDINGS DOMESTIC ONLY

	<u>HARLINGEN (HRL)</u>					<u>TOTALS</u>
	<u>WN</u>	<u>AE</u>	<u>COEX</u>	<u>SY</u>	<u>Other</u>	
November 2001	22,514	0	4,602	542	80	27,738
November 2002	24,500	N/A	4,659	225	0	29,159
% Change	8.8%	N/A	1.2%	-58.5%	N/A	5.1%
YTD 2001	311,391	36,150	54,771	7,365	949	410,626
YTD 2002	300,458	N/A	57,415	242	1,317	359,190
% Change	-3.5%	N/A	4.8%	-96.7%	38.8%	-12.5%

	<u>McALLEN (MFE)</u>				<u>TOTALS</u>
	<u>AA</u>	<u>CO</u>	<u>TWA</u>	<u>Other</u>	
November 2001	7,039	14,276	0	0	21,315
November 2002	5,994	14,495	0	631	21,120
% Change	-14.8%	1.5%	N/A	N/A	-0.9%
YTD 2001	85,492	181,659	7,767	1,790	276,708
YTD 2002	74,944	176,415	N/A	2,577	253,936
% Change	-12.3%	-2.9%	N/A	44.0%	-8.2%

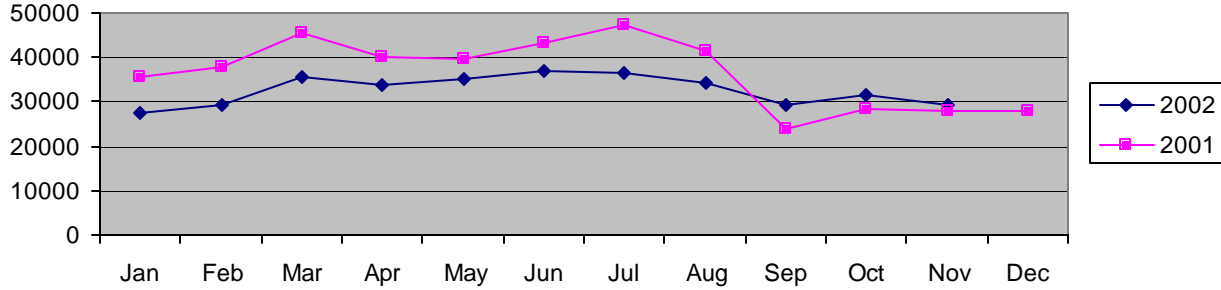
	<u>BROWNSVILLE (BRO)</u>		<u>TOTALS</u>
	<u>CO</u>		
November 2001	4,821		4,821
November 2002	4,866		4,866
% Change	0.9%		0.9%
YTD 2001	65,683		65,683
YTD 2002	64,831		64,831
% Change	-1.3%		-1.3%

## RGV AIRPORT MARKET SHARE DOMESTIC ONLY

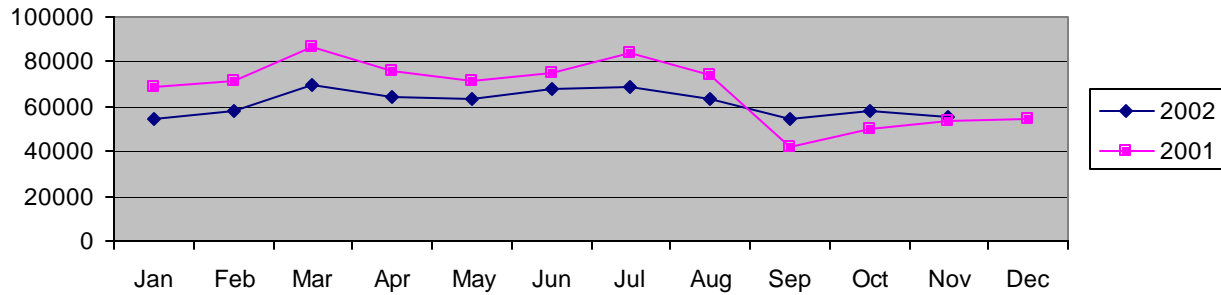
	<u>HRL</u>	<u>MFE</u>	<u>BRO</u>	<u>TOTAL</u>	<u>% HRL</u>	<u>% MFE</u>	<u>% BRO</u>
November 2001	27,738	21,315	4,821	53,874	51.5%	39.6%	8.9%
November 2002	29,159	21,120	4,866	55,145	52.9%	38.3%	8.8%
% Change	5.1%	-0.9%	0.9%	2.4%			
YTD 2001	410,626	276,708	65,683	753,017	54.5%	36.7%	8.7%
YTD 2002	359,190	253,936	64,831	677,957	53.0%	37.5%	9.6%
% Change	-12.5%	-8.2%	-1.3%	-10.0%			

*Source: BRO, HRL and MFE Airport Management  
Assembled and Distributed by HRL Management*

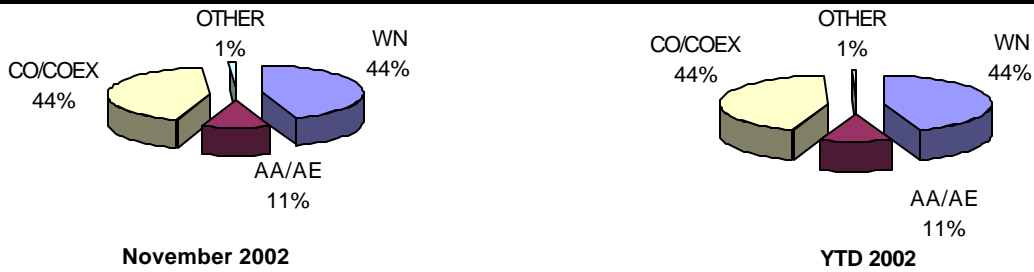
## HRL YTD 2002 vs. 2001



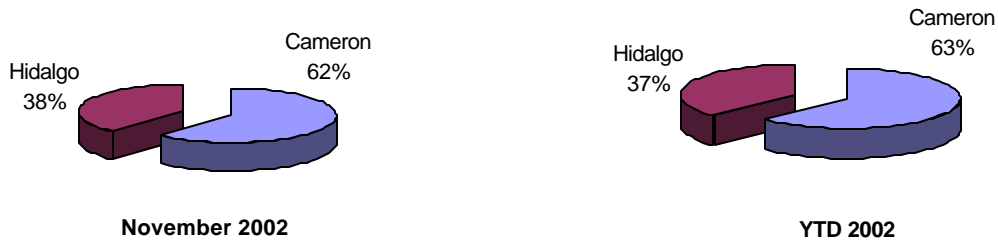
## RGV YTD 2002 vs. 2001



## RGV Domestic Airline Market Share



## Cameron County vs. Hidalgo County



WN - Southwest Airlines  
 AA - American Airlines/AE - American Eagle  
 CO - Continental Airlines/COEX - Continental Express

QUESTIONS OR COMMENTS? CALL:  
 T. MICHAEL BROWNING, A.A.E., DIRECTOR OF AVIATION

TWA - TransWorld Airlines  
SY - SunCountry; Other - Charters

HARLINGEN'S VALLEY INTERNATIONAL AIRPORT  
956/430-8605